

PORTABLE LIGHTING PRODUCTS

Bargain Basement

These are product that are excess stock or have been discontinued

Stinger Rechargeable

The Stinger 240VAC rechargeable for home or office charging is a compact, powerful, rechargeable torch.

It has a variable spot to flood beam, a spare bulb stored in the tailcap and a push-button head switch for momentary or constant on.



Battery	3 x Sub-C NiCd Battery pack
Light Source	1 x High-intensity Xenon 1 x Spare bulb in tailcap
Light Output	125 Lumens 15,000 Peak beam candlepower
Focus Type	Adjustable Spot to Flood
Run Time	1 hour
Weight	283 Grams
Dimensions	Length 188mm
Material	Machined aluminum housing that is anodized against corrosion inside and out.
Special Features	LED charge-continuity indicator, Compact, snap-in charger holder that mounts in any position, Serialized for positive identification

Stinger Order Code: 75201 with a 240VAC charger.

Executive Flashlight

Due to sophisticated circuit technology LIGHTWAVE™ flashlights are the world's most efficient portable light.

LUMENS	7.2
LUX Readings at 300mm:	
Starting brightness	983 lux
Usable light after 300 hours	>1 lux
WEIGHT W/BATTERIES	174 grams
SIZE	Length: 230mm Diameter: 27mm
BATTERIES	3 Alkaline 'AA' Cells
BATTERY BURN TIME	300 Hours
CONSTRUCTION	ABS housing
SPECIAL FEATURES	Electronic switch, protective bumper head and shockproof.
COLOR	Brushed silver



***300 hours**

4 LED 3 AA
Order Code: Tec2000

* Average hours use with fresh alkaline batteries to the point where fine newsprint can

Montville Creative Products

PO Box 224 Montville 4560
E: Info@mcproducts.com.au

P: 0411 639 910

ABN: 14 952 105 278
W: mcproducts.com.au

PORTABLE LIGHTING PRODUCTS

Pro Headlamp Order Code: Pro2020

This excellent AA cell LED Headlamp is both shockproof and waterproof. The four super-bright LED's have a life expectancy of 100,000 hours and their housing can be adjusted up and down to provide light where you need it.

The high-impact acytel housing is virtually unbreakable and never feels cold in the hand.

The 25mm wide adjustable straps ensure comfort and an easy-to-use twist-on / twist-off switch ensures reliability.



Utilises four super-bright white LED's

Waterproof to 500mm - not just water resistant

Engineered to withstand a 1.2M drop onto bare concrete

The light angle can be adjusted up or down

3 year warranty (covers everything except batteries and abuse)

Extremely low operating cost

300 hours of battery life **

LUX	1009 at starting < 1 lux @300 hours
LUMENS	7.2
WEIGHT W/BATTERIES	200 grams
BATTERIES	3 'AA' Alkaline Batteries
BATTERY BURN TIME	300 Hours
COLOR	Non-glare Black

** The manufacturer states this is the average hours use with fresh alkaline batteries after which fine newsprint can be read from an illumination distance of 150mm.

This is not what I call "useable light". I trialed one for 5 hours a day and was still using it to walk after 30 hours and for desk work after 50 hours. What is "useable light" will be different for each of us but nevertheless you will be impressed with the battery life..

Sabrelite™ Xenon Lamp Flashlight

The Super SabreLite™ is made of unbreakable ABS material with a hi-impact polycarbonate lens. The SabreLite™ has an exclusive state-of-the-art laser spot xenon lamp module that produces a tightly focused white light beam.

The SabreLite™ includes a belt clip, stainless steel split ring and lanyard allowing the flashlight to be attached to a pocket, belt or a hand.

Accidental turn on and mechanical switch failure is eliminated because of the rotary on/off switch.



Battery	3 x C Alkaline
Light Source	Xenon
Light Output	33 Lumens, 12,000 Peak Beam Candlepower
Focus Type	Spot
Run Time	Max. 4.5 hours
Weight	363 Grams
Length	198 mm
Material	ABS Resin Body
Special Features	Submersible to 150 metres

Super Sabrelite™ Order Code:2000C

AUS Approved Intrinsically Safe
AUS Ex e ib IIC T4 IP67 Zone 1
Cert # AUS Ex 04.3953X
(Manufactured between Sept 30, 2004 & Dec 31, 2006)
IEC Approved Intrinsically Safe
Ex ib e IIC T4 IP67
Cert # IECEx TSA 06.0021X
(Manufactured from Jan 1,2007)

Montville Creative Products

PO Box 224 Montville 4560

E: Info@mcproducts.com.au

P: 0411 639 910

ABN: 14 952 105 278

W: mcproducts.com.au

PORTABLE LIGHTING PRODUCTS

The Versabrite II™ Incorporates all the features of the original VersaBrite with the addition of a large 2.5cm diameter modified spot reflector module .This produces a soft wide beam that covers 4 times the area of the VersaBrite.

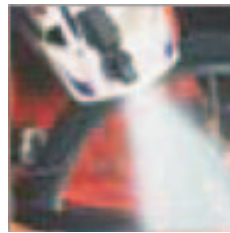
A multiple position swivel head allows you to point light bright beam in any direction. Due to its compact size and weight of only 100 gram, the VersaBrite II™ securely clips on to visors, caps, and clothing. It includes 2-AA cell alkaline batteries and is water resistant (not for diving applications).



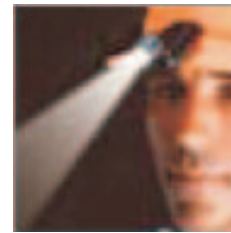
CANDLEPOWER 8,000
LUMENS 5.0
WEIGHT W/BATTERIES 100 gram
BATTERIES 2 Alkaline 'AA' Cells
BATTERY BURN TIME 4.5 Hours @ 10° C



Swivel head



Hands -free



Cap/clothing clip

Versabrite II
Order Code: 2270C

Water resistant. Pelican's latest addition to the VersaBrite family in an LED version. Dual super bright white LEDs never need replacing and provide over 100 hours of battery usage. Body made of virtually indestructible Xenoy®. Lights turn on when head is flipped up. Swivel head pivots to a full 180° for light where you need it. Multiple use built-in clip attaches to surfaces up to 12mm thick.



Battery 2 x Cr2032
Light Source LED's
Light Output 5.5 Lumens
Focus Type Wide
Run Time Max. 100 hours
Weight 28 Grams
Dimensions Length 89mm
Material Polycarbonate



Special Features Dual super bright white LED's. Light turns on when the head is flipped up. It also pivots to a full 180° for aiming light where you need it. The built-in clip attaches to surfaces up to 12mm thick.

L

VB 3 LED
Order Code: 2220C

Montville Creative Products

PO Box 224 Montville 4560
 E: Info@mcproducts.com.au

P: 0411 639 910

ABN: 14 952 105 278
 W: mcproducts.com.au